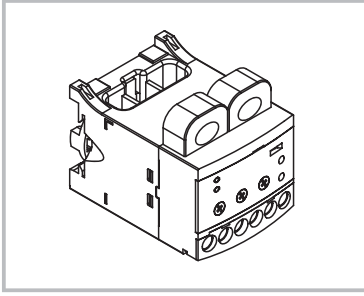


EOCR-SS

Electronic Overcurrent Relay



RD13-03-009_R2_2014.01
3090-SS000-10



© 2014 Schneider Electric.
All rights reserved.

! DANGER

HAZARD OF ELECTRIC SHOCK, EXPLOSION, OR ARC FLASH
Disconnect all power before servicing equipment.

Failure to follow these instructions will result in death or serious injury.

WARNING

- Authorized technical engineers only for installation, maintenance or repair.
- Check periodically whether products work properly. Self-trip, especially, is not applicable if FS (Fail Safety mode) is selected to R.
- 18 months warranty from the date of shipment.

NOTE

Visit our website at www.schneider-electric.co.kr to download user manuals for the EOCRSS.

Operating characteristics

		EOCRSS-05	EOCRSS-30	EOCRSS-60
Current Range	LOAD	0.5...6A	3...30A	5...60A
Starting Time	D-TIME	0.5s, 1...30s	0.5s, 1...30s	0.5s, 1...30s
Overload Trip Delay Time	O-TIME	0.5s, 1...10s	0.5s, 1...10s	0.5s, 1...10s

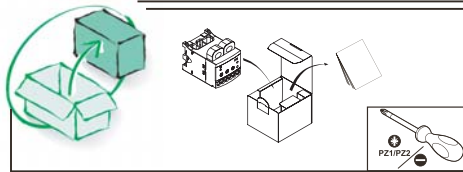
To use a load current above 60A, please combine a 05 with an external CT which secondary current is 5A.

For more information about the combination, refer to "How to order" on the below.

Reset	Manual (Reset button), Electrical Reset, t > 0.8s		
Trip Delay	Definite		
Indicator	Green LED for power		
	Orange LED for trip		
Power Supply [Us]	EOCRSS - ●●S		EOCRSS - ●●W
	Us 24...240VAC 50/60Hz		Us 380...440VAC 50/60Hz
Rated Insulation Voltage [Ui]	Us 24...240VDC		
	Comply with IEC 60947-4-1		690V
Rated Impulse Withstand Voltage [Uimp]	Comply with UL and CSA		600V
	6kV		
Contact Composition	1 NC+1 NO 3A/250VAC, 5A/30VDC, Resistive		
Contact Status	N type		R type
	Normally relay energized		De-energized
Mounting	35mm DIN-Rail / Panel mounting		
Power Consumption	< 2W		
Weight	140g		

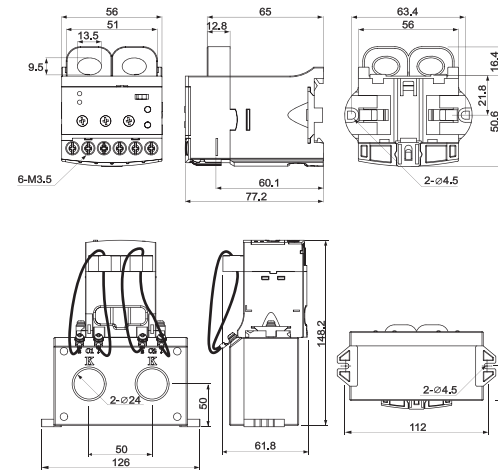
Environment

International Compliance	IEC 60947-4-1	
IP Protection Degree	IP 20	
Ambient Temperature	Storage	Operation
	-30...80°C	-20...60°C [IEC 60947-4-1]
Altitude	2000m	
Shock Resistance	15gn - 11ms	
Vibration Resistance	4gn	
Dielectric Strength	Between enclosure and circuit block	2kV, 50/60Hz, 1 min
	Between contacts	1kV, 50/60Hz, 1 min
	Between circuit blocks	2kV, 50/60Hz, 1 min
Surge Withstand	6kV	
Immunity to ESD (Electrostatic Discharge)	Air	8kV (level 3)
	Contact	6kV (level 3)
Immunity to Radiated Radio-Frequency Disturbance	10V/m (level 3)	
Immunity to Fast Transients	2kV	
Conducted Emissions	Class A	
Conducted HF Disturbance	10V	

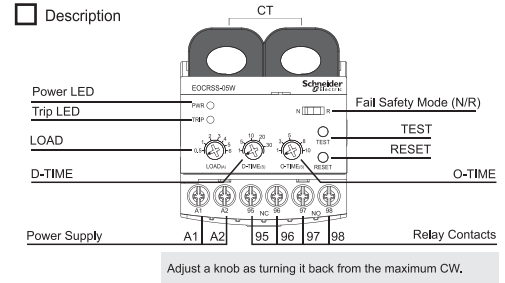


9mm (0.35 in) mini.	< 45 °C (< 113 °F)
9...40mm (0.35...1.57 in) mini.	45...60 °C (113...140 °F)
40mm (1.57 in) mini.	> 60 °C (> 140 °F)

Dimensions



Description

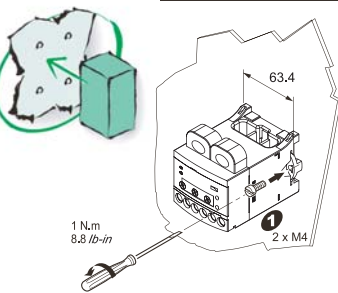


LED Indication

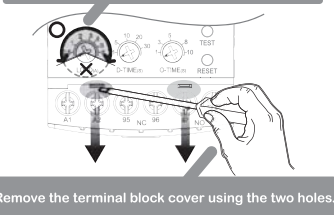
Notification	PWR(Green LED)	TRIP(Orange LED)
Power on	On	Off
Load in starting	D-TIME Note 1	On
Load in operation	On	Off
Overload	O-TIME Note 2	On
Overload trip	Off	On

Note 1 During D-TIME, all the detected overloads are ignored.

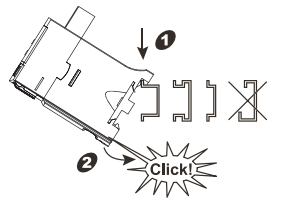
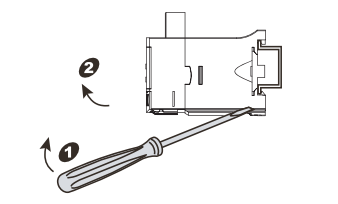
Note 2 The indicator shows "Overload" notification while overloads are being detected. The relay will be de-energized when overload trip delay time has passed.



Do NOT use excessive range to rotate the knobs.

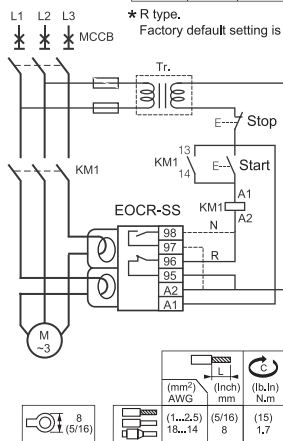


Remove the terminal block cover using the two holes.



R type	95-96	97-98
N type	Open	Close

* R type.
Factory default setting is R.



How to order



No	Type	Detachable Current Range	Description
①	Standard	05 0.5...6A	Above 60A, use combination type.
		30 3...30A	
		60 5...60A	
	Combination with an external CT	D1	10...100A
DH		15...150A	150:5 2CT (150:5 CT combination)
D2		20...200A	200:5 2CT (200:5 CT combination)
D3		30...300A	300:5 2CT (300:5 CT combination)
D4	40...400A	400:5 2CT (400:5 CT combination)	

② Power Supply	S	24...240VAC/DC
	W	380...440VAC