



Acti9

Enclosures



[schneider-electric.com](https://www.schneider-electric.com)

Life Is 

Schneider
Electric

Acti9 Philosophy



Stylish

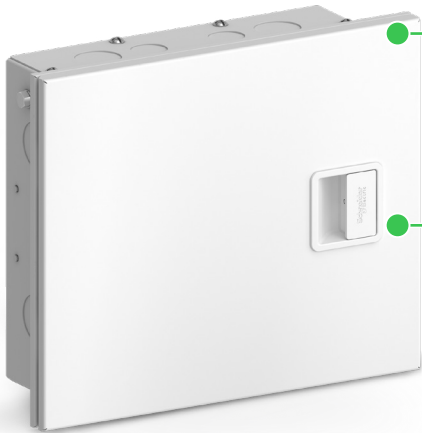
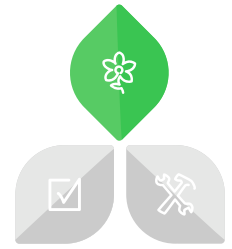
Reliable

Easy to install



Stylish

- Customization option available for making the enclosure a part of your home décor
- Attractive colour and finish - blends in with most commonly used wall shades
- Clean design of enclosure door - no frame visible
- Ergonomic and aesthetically pleasing door knob



Attractive colour and finish

Blends in with most commonly used wall shades



Ergonomic door knob

Helps to ensure reliable and easy operation



Step-1: Scan
Scan QR code or log on to the website.

Step-2: Select
Choose from the pre-defined list of pictures (or) customize with a picture of your choice.

Step-3: Personalize
Upload picture of your choice and review how the photo looks on the enclosure.

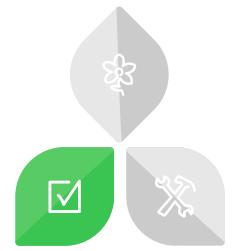
Step-4: Checkout
Add to cart, enter delivery address, and make payment. Get the product delivered to your door step.

Unhide your enclosure!



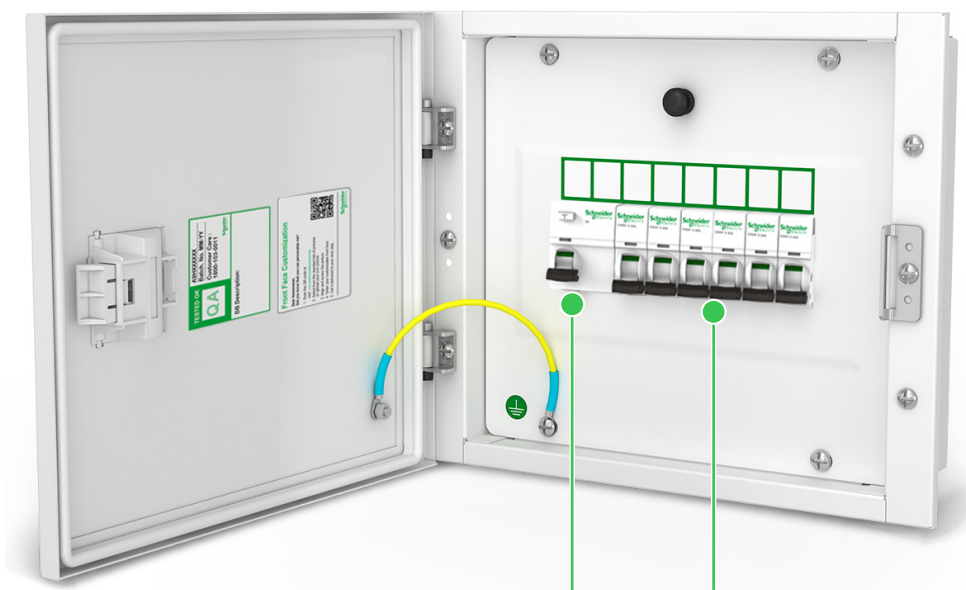
Reliable

- Assurance of Schneider Electric brand quality and technology promise
- Reliable protection
- Conforming to international standards - tested for IEC 61439-3
- IP43 and IK08 helps to ensure protection of operation and components inside
- Insulated neutral bar
- Glow wire tested



IK08
tested

IP43
tested

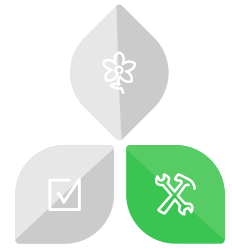


RCCB

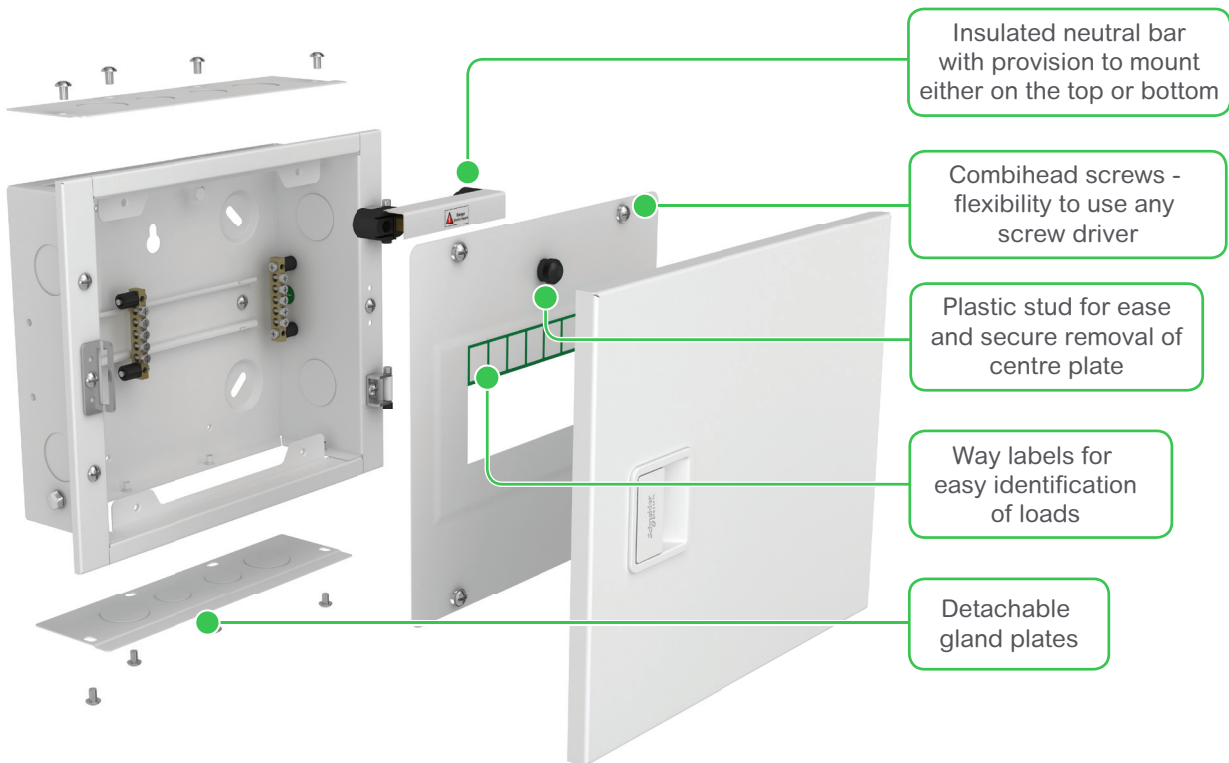


MCB

Easy to install



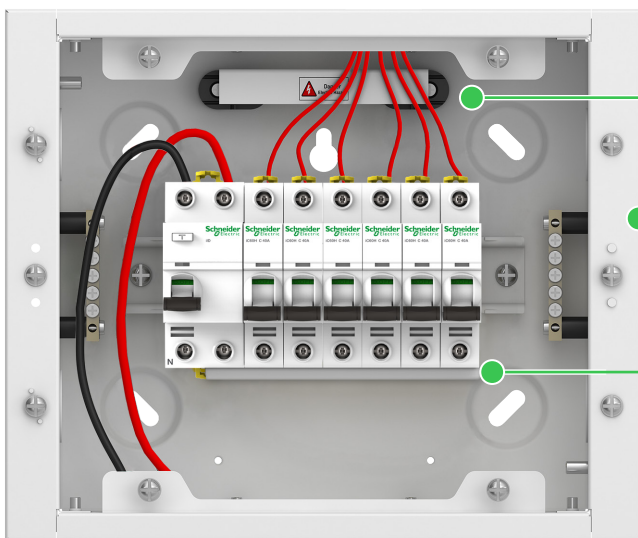
- 3 piece architecture
- **Flexibility of installation** - Reversible door, detachable gland plates, and neutral bar assembly provision on top or bottom
- Maximized wiring space
- Independent centre plate
- 45° angled hole for easy installation and 1 key hole for easy alignment
- Unique 5-hole mounting for single-person fixing
- Simple 3-piece design for quick assembly



Features

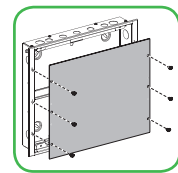
Acti9 enclosures are perfectly adapted to their application as key links in the electrical distribution chain.

- Clean and attractive colour and finish (White RAL 9003)
- Unique design of door knob for easy operation
- Compliant to IEC 61439-3
- IP compliant to IEC 60529
- High-quality powder coating for long life and reliability under tough conditions
- Maximized wiring space for clean installation
- Cement spill protector helps to avoid entry of dust and cement particles



Maximized wiring space

Enclosure supplied with cement spill protector



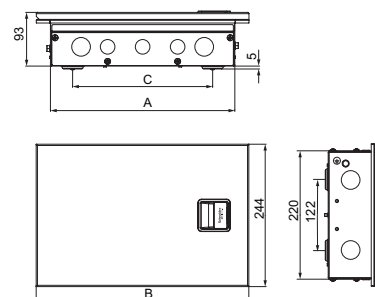
Insulated phase busbar

Single Pole Neutral (SPN)

- SPN for distribution of single phase neutral supply to respective load MCBs
- Number of ways ranging from 4 to 16 (including incomer)
- Current rating up to 63 A
- Voltage rating - 240 V
- Frequency - 50 Hz
- IP43
- Short circuit breaking capacity up to 10 kA
- Incomer - DP RCCB/MCB
- Outgoing - SP MCBs

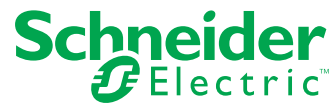


Dimensions (mm)



Enclosures				
Commercial Reference	Description	A	B	C
A9HESN04	Acti9 DB 4 way Single Phase Neutral	172	221	96
A9HESN06	Acti9 DB 6 way Single Phase Neutral	208	257	132
A9HESN08	Acti9 DB 8 way Single Phase Neutral	244	293	168
A9HESN12	Acti9 DB 12 way Single Phase Neutral	316	365	240
A9HESN16	Acti9 DB 16 way Single Phase Neutral	388	437	292

Life Is On



[schneider-electric.com](https://www.schneider-electric.com)

Schneider Electric

Enter country address in this space